



**India Meteorological Department
(Ministry of Earth Sciences)
NATIONAL BULLETIN NO. 10 (BoB/02/2025)**

TIME OF ISSUE: 1230 HOURS IST

DATED: 16.07.2025

FROM: INDIA METEOROLOGICAL DEPARTMENT

(FAX NO. 24643965/24699216/24623220)

TO: CONTROL ROOM, NDM, MINISTRY OF HOME AFFAIRS (FAX.NO. 23093750)

CONTROL ROOM NDMA (FAX.NO. 26701729)

CABINET SECRETARIAT (FAX.NO.23012284, 23018638)

PS TO HON'BLE MINISTER FOR S & T AND EARTH SCIENCES (FAX NO.23316745)

SECRETARY, MOES (FAX NO. 24629777)

H.Q. (INTEGRATED DEFENCE STAFF AND CDS) (FAX NO. 23005137/23005147)

DIRECTOR GENERAL, DOORDARSHAN (23385843)

DIRECTOR GENERAL, AIR (23421105, 23421219)

PIB MOES (FAX NO. 23389042)

UNI (FAX NO. 23355841)

D.G. NATIONAL DISASTER RESPONSE FORCE (NDRF) (FAX NO. 26105912, 2436 3260)

DIRECTOR, PUNCTUALITY, INDIAN RAILWAYS (FAX NO. 23388503)

CHIEF SECRETARY, ODISHA (FAX NO. 0674-2536660)

CHIEF SECRETARY, WEST BENGAL (FAX NO. 033-22144328)

CHIEF SECRETARY, GOVT. OF SIKKIM (FAX NO.0359-2222851)

CHIEF SECRETARY, GOVT. OF BIHAR (FAX NO. 0612-2217085)

CHIEF SECRETARY, GOVT. OF JHARKHAND (FAX NO. 0651-2400255)

CHIEF SECRETARY, GOVT. OF CHHATTISGARH (FAX NO. 0771-2221206)

CHIEF SECRETARY, GOVT. OF MADHYA PRADESH (FAX NO. 0755-2551521)

CHIEF SECRETARY, GOVT. OF RAJASTHAN (FAX NO. 0141-2227114)

CHIEF SECRETARY, GOVT. OF ASSAM (FAX NO. 0361-2260900)

CHIEF SECRETARY, GOVT. OF MEGHALAYA (FAX NO. 0364-2225978)

Subject: (A) Well Marked Low Pressure area over Southwest Bihar and adjoining east Uttar Pradesh (B) Well Marked Low pressure area over northwest Rajasthan and neighbourhood

(A) Well Marked Low Pressure area over southwest Bihar and adjoining East Uttar Pradesh

The well marked low pressure area over southwest Bihar and adjoining east Uttar Pradesh persisted over the same region at 0830 hrs IST of today, the 16th July 2025.

It is likely to move west-northwestwards across east Uttar Pradesh during next 24 hours. However, the system is under continuous monitoring for possible re-intensification.

(B) Well Marked low pressure area over northwest Rajasthan and neighbourhood

The well marked low pressure area over northwest Rajasthan persisted over the same region at 0830 hrs IST of today, the 16th July, 2025.

It is likely to weaken into a low pressure area during next 12 hours.

Warnings:

(i) Rainfall Warning:

Bihar: Light to moderate rainfall at most places with heavy to very heavy rainfall at isolated places on 16th July and heavy rainfall at isolated places on 17th July.

Jharkhand: Light to moderate rainfall at most places with heavy to very heavy rainfall at a few places on 16th July.

Chhattisgarh: Light to moderate rainfall at most places with heavy to very heavy rainfall at isolated places on 16th July and heavy rainfall at isolated places on 17th & 18th July.

Sub-Himalayan West Bengal & Sikkim: Light to moderate rainfall at most places with heavy rainfall at isolated places on 16th July.

East Uttar Pradesh: Light to moderate rainfall at most places with heavy to very heavy rainfall at isolated places on 16th & 17th July.

West Uttar Pradesh: Light to moderate rainfall at most places with heavy rainfall at isolated places during 16th – 18th July with very heavy rainfall at isolated places on 17th July.

Madhya Pradesh: Light to moderate rainfall at most places with heavy rainfall at isolated places during 16th -18th July.

East Rajasthan: Light to moderate rainfall at most places with heavy rainfall at isolated places on 16th & 17th July.

West Rajasthan: Light to moderate rainfall at most places with heavy rainfall at isolated places on 16th July.

(ii) Impact Expected and Action Suggested due to heavy rainfall and squally winds

Impact expected:

- ❖ Heavy rainfall may damage plantation, horticulture and standing crops.
- ❖ Partial damage to vulnerable structures due to heavy rain.
- ❖ Minor damage to kutchha houses/walls, huts and roads due to heavy rain.
- ❖ Road and rail traffic may be affected due to heavy rain.
- ❖ There could be localised landslides, mudslides, landslips, water logging, inundation and flooding over low lying areas.
- ❖ Occasional reduction in visibility due to heavy rainfall.
- ❖ Helicopter services may get affected.

Action suggested:

- ❖ People are advised to keep a watch on the weather for worsening conditions and be ready to move to safer places accordingly.
- ❖ Take safe shelters; do not take shelter under trees, as there could be lightning.
- ❖ In case of expected lightning, unplug electrical/ electronic appliances, immediately, get out of water bodies and keep away from all the objects that conduct electricity.
- ❖ Tourism and recreational activities to be regulated.
- ❖ Helicopter services to be regulated.

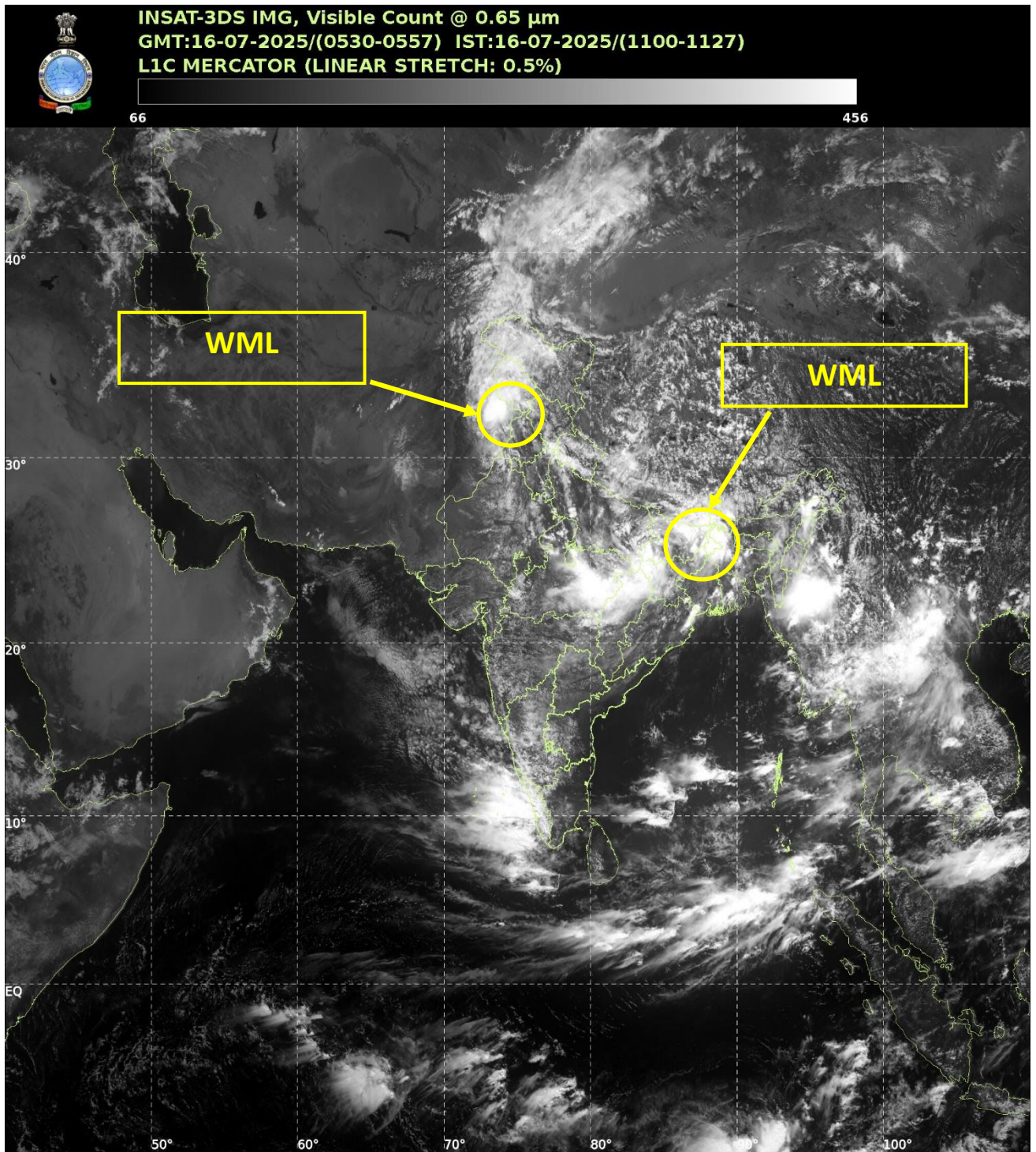
Significant rainfalls accumulated in past 24 hrs recorded at 0830 hrs IST of today, the 16th July, 2025 are given in Annexure-I

This is the last update in association with this system. However, regular weather bulletins will continue from National Weather Forecasting Centre and respective Regional Meteorological Centres and Meteorological Centres in association with the Well Marked Low Pressure Areas mentioned in the bulletin.

(Ananda Kumar Das)

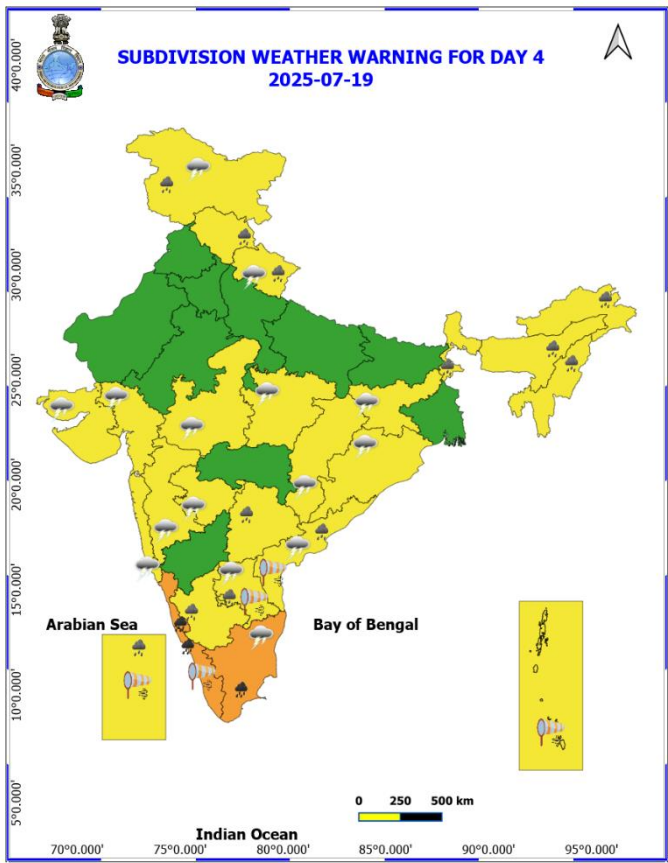
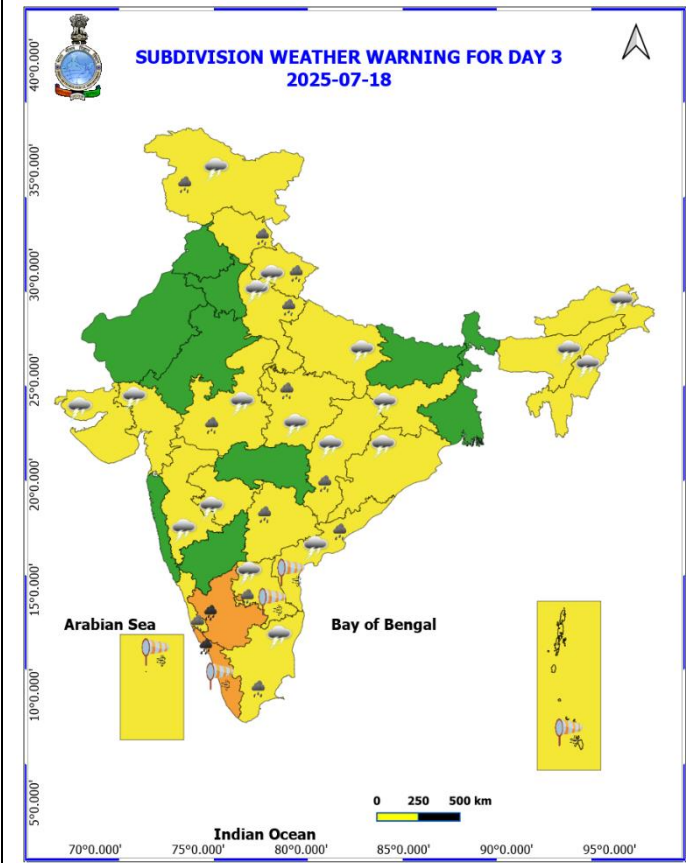
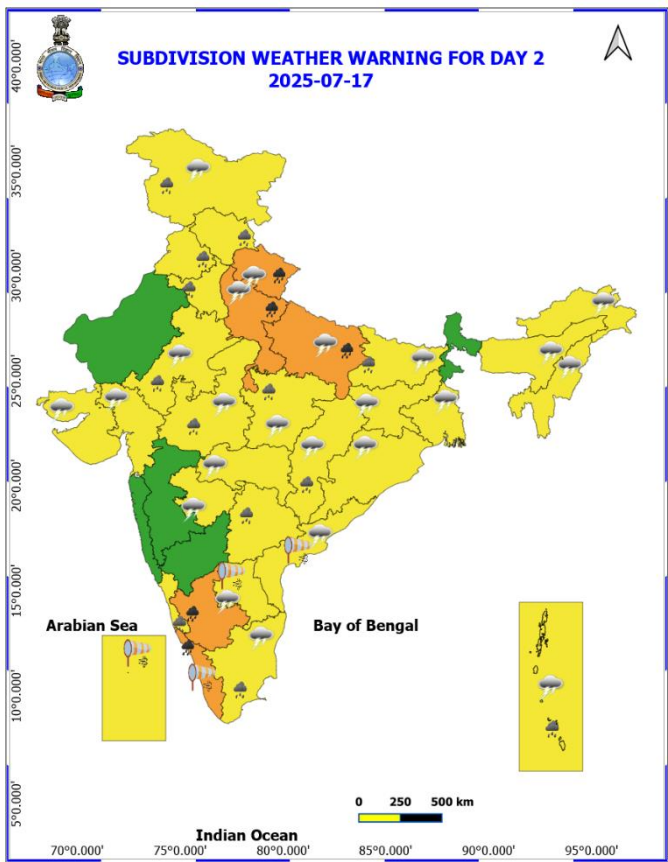
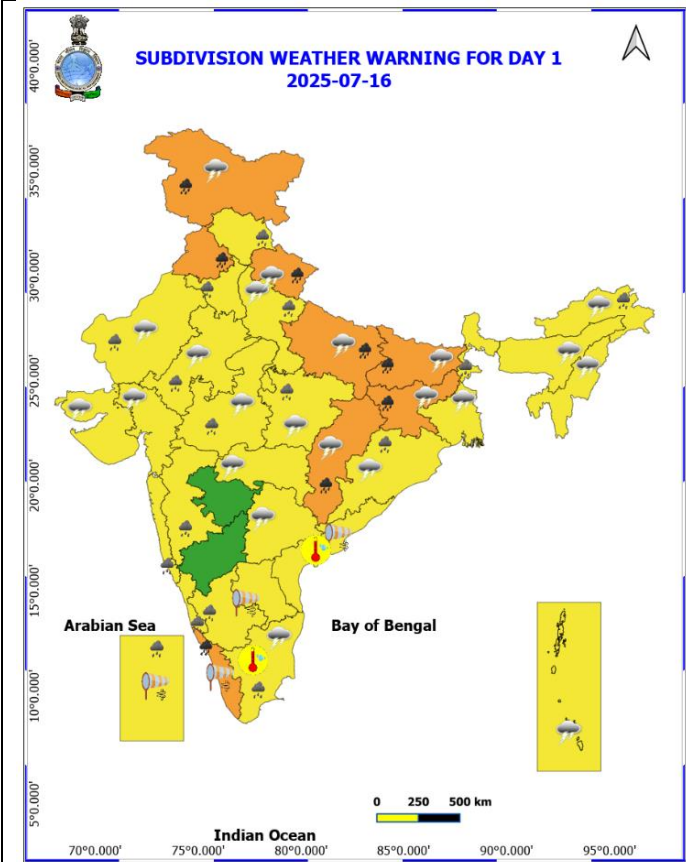
Scientist-F, RSMC & IMD, New Delhi

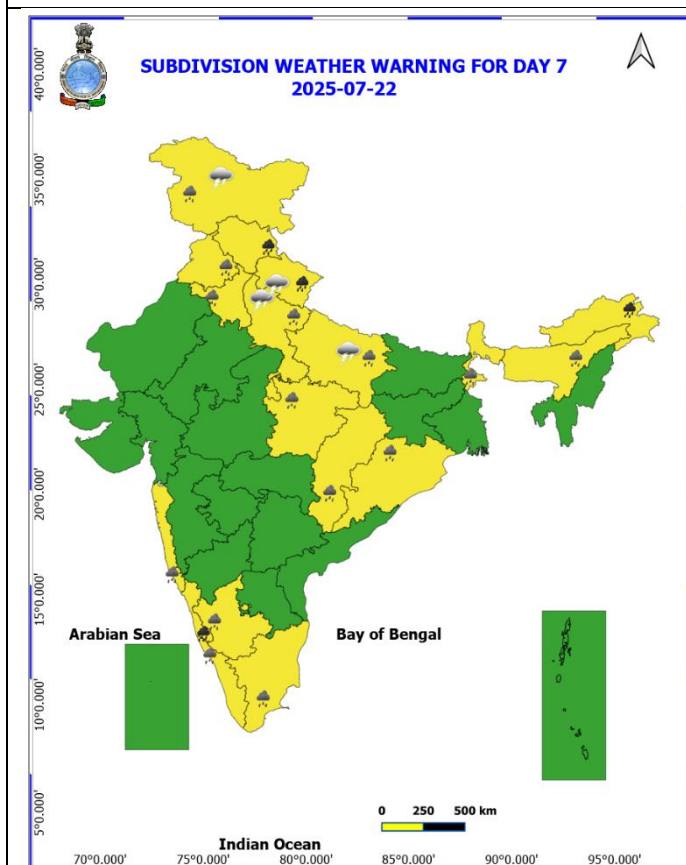
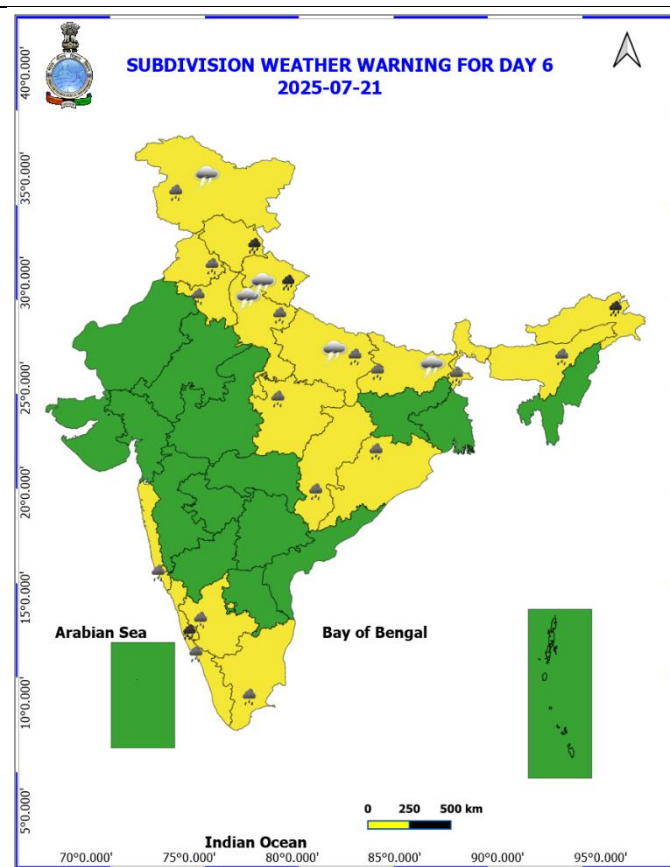
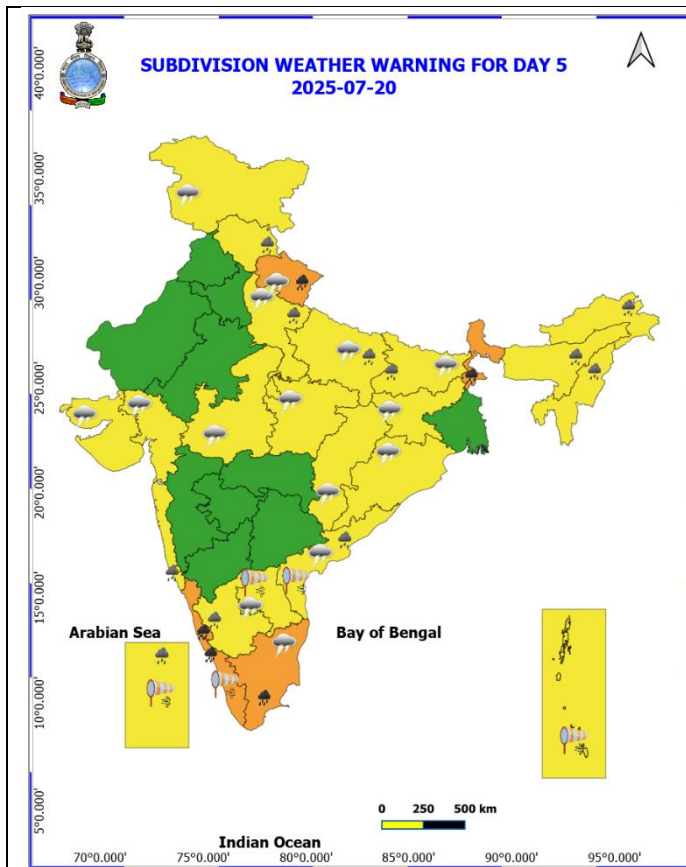
Copy to: ACWC Kolkata/ACWC Chennai/CWC Bhubaneswar/CWC Vishakhapatnam/Meteorological Centres- Port Blair/ Itanagar/ Kohima/ Agartala/ Gangtok/ Imphal/ Aizwal/ Shillong/ Gangtok/ Regional Meteorological Centre Guwahati



WML – Well Marked Low Pressure Area

Weather Warning Graphics





COLOUR CODED WARNING

- No Warning (No Action)
- Watch (Be Aware)
- Alert (Be Prepared To Take Action)
- Warning (Take Action)

Probabilistic Forecast

Terms	Probability of Occurrence (%)
Unlikely	< 25
Likely	25 - 50
Very Likely	50 - 75
Most Likely	> 75

Weather Warnings Legend:

- Fog
- Heavy Rain
- Very Heavy Rain
- Extremely Heavy Rain
- Thunder & Lightning
- Hailstorm
- Dust Raising Winds
- Heavy Snow
- Dust Storm
- Heat Wave
- Warm Night
- Hot Day
- Hot & Humid
- Strong Surface Winds
- Cold Wave
- Cold Day
- Ground Frost

* Red colour warning does not mean "Red Alert", Red colour warning means "Take Action".
Forecast and Warning for any day is valid from 0030 hours IST of day till 0030 hours IST of next day.
For more details, kindly visit <https://mausam.ind.gov.in> or contact: 011-24334-4599
(Service to the Nation since 1875)

Flash Flood Guidance

24 hours Outlook for the Flash Flood Risk (FFR) till 0530 IST of 17-07-2025 :

Low to Moderate flash flood risk likely over few watersheds & neighbourhoods of following Met Sub-divisions during next 24 hours.

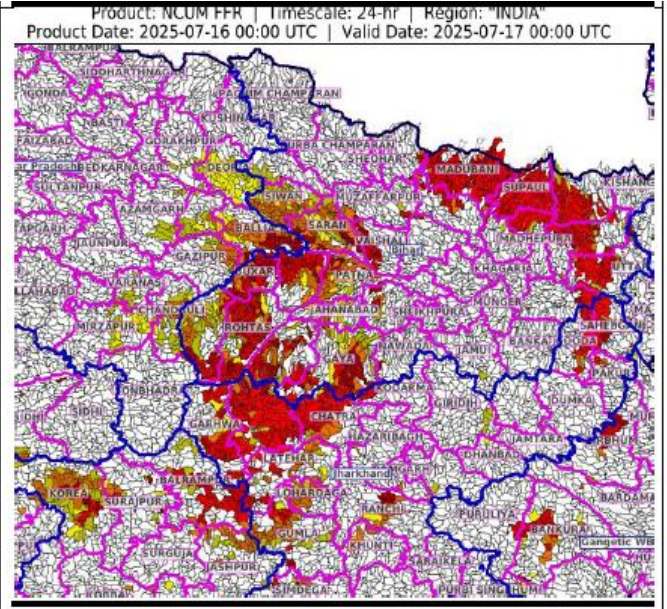
Jharkhand – Gumla, Simdega, Lohardaga, Latehar, Chhatra, Khunti, Hazaribagh, Guda, Pakur, Sahebganj, Ramgarh, Dhanbad, Garhwa, Palamu, Kodarma, Giridih and Ranchi districts.

Bihar – Katihar, Bhagalpur, Purnia, Madhepura, Supaul, Araria, Madhubani, Darbhanga, Samastipur, Muzaffarpur, Gopalganj, Siwan, Saran, Vaishali, Patna, Bhojpur, Buxar, Nalanda, Jahanabad, Arwal, Nawada, Gaya, Aurangabad, Rohtas and Bhabua districts.

North Chhattisgarh – Surguja, Surajpur, Jashpur, Raigarh, Korea, Korba and Balrampur districts.

Adjoining East Uttar Pradesh – Deoria, Gorakhpur, Ballia, Mau, Azamgarh, Gazipur, Varanasi, Chandauli and Mirzapur districts.

Surface runoff/ Inundation may occur at some fully saturated soils & low-lying areas over Area of Concern (AoC) as shown in map due to expected rainfall occurrence in next 24 hours.



Flash Flood Risk

High Risk (Take Action)

Moderate Risk (Be Prepared)

Low Risk (Be Updated)

Significant rainfall recorded (in cm) from 0830 hours IST of yesterday to 0830 hours IST of today, the 16th July, 2025:

Jharkhand: Chainpur (dist Palamu) 20; Daltonganj (dist Palamu) 16; Rajdhanwar (dist Giridih) 15; Dhurki (dist Garhwa) 11; Sikatia (dist Deoghar), Lesliganj (dist Palamu) 10 Each; Panki (dist Palamu), Barkisuriya (dist Giridih), Tuladih (dist Giridih) 9 Each; Giridih (dist Giridih), Sujani Kvk AWS (dist Deoghar), Hazaribagh Kvk AWS (dist Hazaribagh), Bariyatu (dist Latehar), Nawa Bazar (dist Palamu) 8 Each; Jamtara (dist Jamtara), Topchanchi (dist Dhanbad), Papunki (dist Dhanbad), Koner (dist Hazaribagh), Tilaiya (dist Koderma), Palganj (dist Giridih), Purvi Tundi (dist Dhanbad), Borio (dist Sahibganj), Naudiha Bazar (dist Palamu), Karmatand (dist Jamtara), Padma Dvc (dist Hazaribagh), Tundi (dist Dhanbad) 7 Each;

Chhattisgarh: Ramanujganj (dist Balrampur) 12; Doura Kochali (dist Balrampur), Chalgali (dist Balrampur), Suhela (dist Baloda Bazar) 10 Each; Ramchandrapur (dist Balrampur) 9; Balrampur (dist Balrampur), Kusmi (dist Balrampur), Takhatpur (dist Bilaspur) 8 Each; Pallari/Palari (dist Baloda Bazar), Shankargarh (dist Balrampur) 7 Each;

Bihar: Dobhi (dist Gaya) 19, Sherghati (dist Gaya) 18, Fatehpur (dist Gaya) 18, Mohanpur (dist Gaya) 17, Kodawanpur/c.b Ii (dist Begusarai) 17, Barachatti (dist Gaya) 17, Cheria B.pur 1 (dist Begusarai) 17, Bankey Bazar (dist Gaya) 16, Dalsinghsarai (dist Samastipur) 14, Khaira (dist Jamui) 14, Tankuppa (dist Gaya) 13, Garhi (dist Jamui) 13, Imamganj (dist Gaya) 13, Sonbarsa (dist Saharsa) 13, Nawkothe (dist Begusarai) 13, Bachwara (dist Begusarai) 12, Madanpur (dist Aurangabad) 12, Adhwara (dist Bhabua) 11, Chakai (dist Jamui) 11, Gidhaur (dist Jamui) 11, Sirdala (dist Nawada) 11, Barauni (dist Begusarai) 11, Wazirganj (dist Gaya) 10, Belaganj (dist Gaya) 10, Kutumba (dist Aurangabad) 10, Bhagwanpur (dist Begusarai) 10, Samastipur (dist Samastipur) 9, Laxmipur (dist Jamui) 9, Jamui (dist Jamui) 9, Sono (dist Jamui) 9, Salakhua (dist Saharsa) 9, Beldaur (dist Khagaria) 9, Manihari (dist Katihar) 9, Begusarai (dist Begusarai) 9, Rajauli (dist Nawada) 9, Amarpur (dist Banka) 8, Sirmari B.pur (dist Saharsa) 8, Akbarpur (dist Nawada) 8, Jhajha (dist Jamui) 8, Chautham (dist Khagaria) 8, Meskaur (dist Nawada) 8, Dumaria (dist Gaya) 8, Chhaurahi (dist Begusarai) 8, Garhpura (dist Begusarai) 8, Bibhutipur (dist Samastipur) 8, Suryagadha (dist Lakhisarai) 8, Vidyapati Nagar (dist Samastipur) 7, Hasanpur (dist Samastipur) 7, Banka (dist Banka) 7, Amas (dist Gaya) 7, Gaya Aero (dist Gaya) 7, Guraru (dist Gaya) 7, Dehri (dist Rohtas) 7, Manpur (dist Gaya) 7, Dharhara (dist Monghyr) 7, Nagar (dist Gaya) 7, Rosera (dist Samastipur) 7, Mansi (dist Khagaria) 7, Bakhari (dist Begusarai) 7, Kursela (dist Katihar) 7, Sahebpur Kanal (dist Begusarai) 7, Alauli (dist Khagaria) 7,

Odisha: Baripada (dist Mayurbhanj) 8, Hatadihi (dist Keonjhar) 8,